

Suspected case of novel coronavirus – information for relatives and patients

Dear patients, dear relatives of patients,

This page provides you with some information about how you can protect others from transmissions of respiratory infections. Please heed these measures, including when samples have already been taken from you for coronavirus testing.

Reduce contact



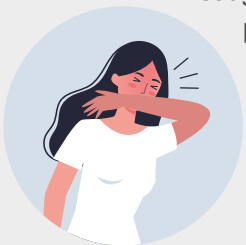
If possible, try to remain alone in a well-ventilated, isolated space or room. Regular ventilation of all rooms where you are present is recommended. Limit how much and how closely you have contact with others, especially with people in risk groups (immunosuppressed individuals, people with chronic diseases, the elderly). Do not receive unnecessary visits. Household staff and any visitors should remain in other rooms or, if not possible, maintain a minimum distance of 1–2m from you. Alternatively: the shared use of rooms should be kept to a minimum and these rooms should be used one at a time where possible. Ensure that rooms used by several people (e.g. kitchen, bathroom) are regularly well-ventilated.

Hand hygiene

should be observed before and when preparing food, before eating, after using the toilet and whenever your hands are visibly dirty. Use water and soap to wash your hands. When using water and soap, disposable paper towels are the ideal way to dry your hands. If disposable towels are not available, use fabric towels and replace them if wet. Healthy people should not use the same towels as sick people.



Coughing and sneezing



Coughing & sneezing etiquette should be observed by everyone at all times, especially by sick people. Maintain distance from others when coughing/sneezing (1m). This means covering your mouth & nose with a handkerchief or when coughing or sneezing into the bend of your elbow, and then washing your hands. Dispose of materials used to cover your mouth or nose, or clean them after use if appropriate.

Handkerchiefs and other waste generated by sick persons or as a result of nursing sick people should always be kept in a lined container in the patient's room before disposal with the rest of the household waste.

Procedure if symptoms worsen suddenly

If respiratory symptoms worsen suddenly, seek medical advice.

We wish you a prompt recovery.